

# KENTALROOF-A CONFORT 400 M4 0,55kW (27940480ALM)

## GENERAL DATA



### ROOF FAN WITH FOLDING SYSTEM AND ALUMINIUM COWL

#### MANUFACTURING FEATURES:

- Protection cowl made of anticorrosive treated aluminum easily removable for motor and impeller maintenance thanks to the integrated folding system.
- The design of the cowl with a **rounded shape** is specific to minimize the risk of water ingress due to rain.
- Equipped with a **hinged system** to open the motor-impeller set. This system allows easy maintenance and cleaning of the set without the need to disassemble the entire structure. The opening is possible in 2 inclinations: approximately 45° and 90°, as required by the intervention.
- Structure in anticorrosive galvanized steel and support frame for adaptation to the roof with anti-bird protection grid.
- High-performance, backward-curved blade (reaction) impellers designed to work without scroll. Self-cleaning system, built in galvanized steel treated with anti-corrosion.
- Standard asynchronous squirrel cage motor with IP-55 protection and Class F insulation. Standard voltages 230V 50Hz for single phase motors, 230/400V 50Hz for three phase motors up to 4kW & 400/690V 50Hz for higher powers and 400V 50Hz for 2 speed motors.

#### APPLICATIONS

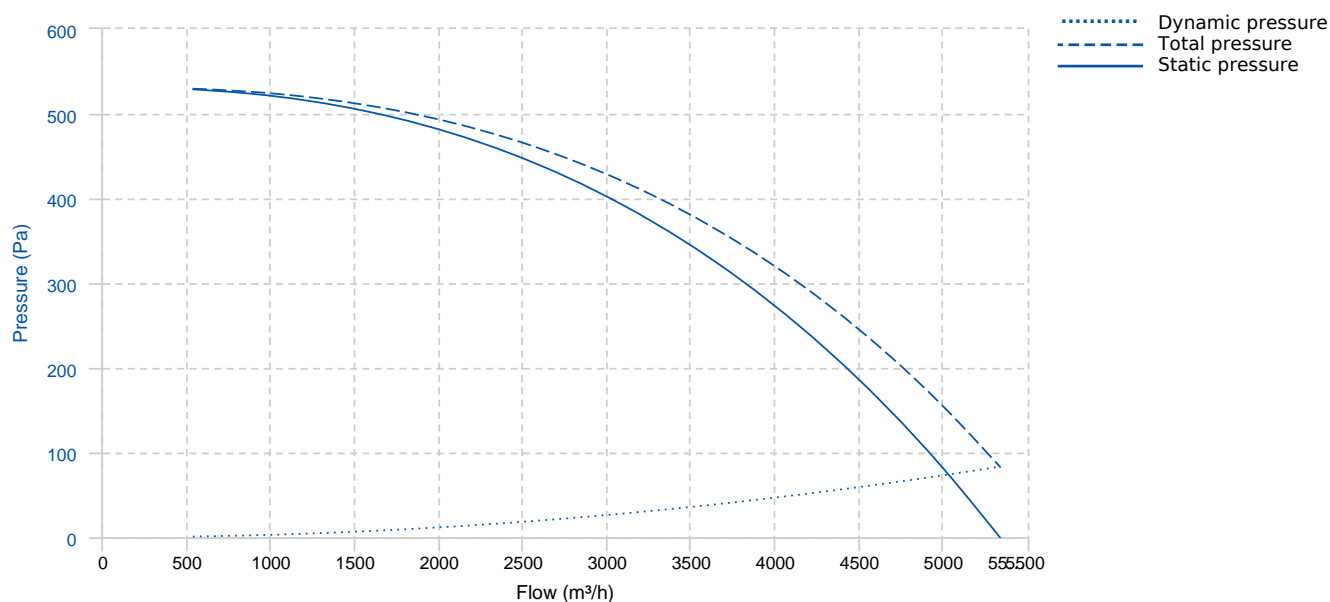
Designed for deck or roof mounting, they are indicated for:

- Smoke extraction.
- Air renewal in all types of buildings and industries.
- Maximum continuous working temperature: transported air 80°C, ambient 60°C to -25°C in three-phase motors.

#### UNDER REQUEST

- Special voltages.
- Special construction for moving air at 120°C. Serie:

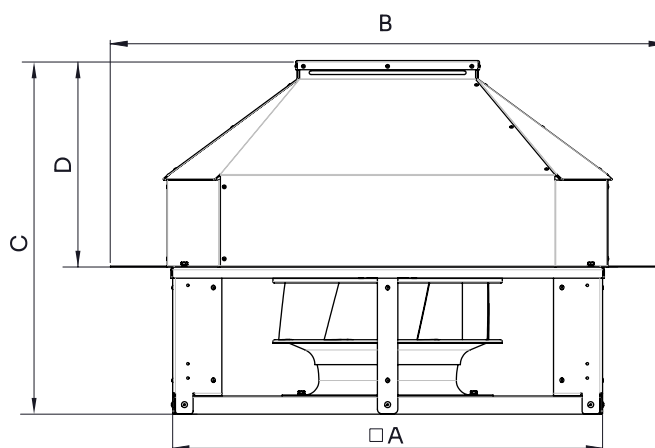
## PERFORMANCE CURVE



## TECHNICAL DATA

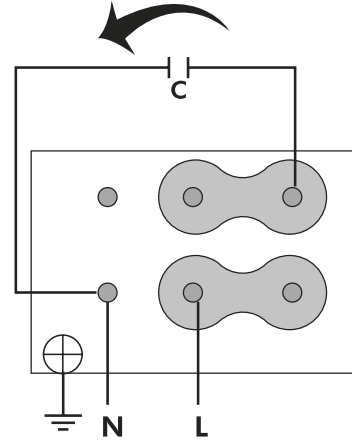
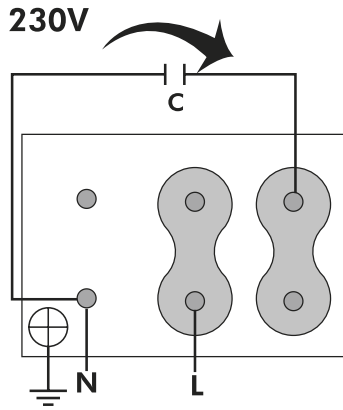
Fan							
RPM	1400	Approx. weight	45 kg	Max. Flow	5340 m³/h		
Motor							
Power	0,55 kW	RPM	1400	Capacitor	20µF 450V	I max. (230V)	3,98 A
Size	80	Approx. weight	9.1 kg	Efficiency (%)	64 %	FP	0.95

## DIMENSIONS



Dimensions (mm)							
A (int)	662	B	860	C	647.5	D	365

## WIRING DIAGRAM



## ACCESSORIES



**SAFETY SWITCH**  
INT 25 3P A  
REF: INT253PA



**CONNECTION FLANGE**  
AC 400  
REF: 960003212



**CIRCULAR SILENCER**  
SIL-C 400/400  
REF: 960040040



**CIRCULAR SILENCER**  
SIL-C 400/600  
REF: 960040060



**CIRCULAR SILENCER**  
SIL-C 400/800  
REF: 960040080



**CIRCULAR SILENCER**  
SIL-CN 400/400  
REF: 961040040



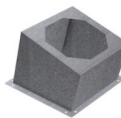
**CIRCULAR SILENCER**  
SIL-CN 400/600  
REF: 961040060



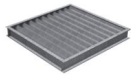
**CIRCULAR SILENCER**  
SIL-CN 400/800  
REF: 961040080



**CIRCULAR-CIRCULAR ANTI-VIBRATION FLANGE**  
BAD 11 (Ø400)  
REF: 960003461



**INCLINED ROOF FAN SUPPORT**  
BTI 640  
REF: A-50870640XX

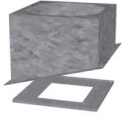


**DEPRESSION DAMPER  
(HORIZONTAL  
VERTICAL PLACEMENT)  
CMP-HUT 500x510  
REF: CMPHUT5051**

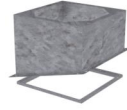
(HORIZONTAL or



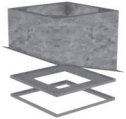
**KENTALROOF VERTICAL DISCHARGE  
KV KENTALROOF 400  
REF: KVKNTR400**



**BTI + ACMP MOUNTED  
BTI+ACMP 640  
REF: BTIACMP640XX**



**BTI + AMC MOUNTED  
BTI+AMC 640  
REF: BTIAMC640XX**



**BTI + ACMP+AMC MOUNTED  
BTI+ACMP+AMC 640  
REF: BTIACMPAMC640XX**